

OUTLET CONTRACT BROADLOOM FLATWOVEN QUALITIES

OUTLET LIST
2026-04-09



Space

The flat woven quality Space combines comfort and quality, and is suitable for extra heavy commercial use. The quality is available in 8 different colours, and can be delivered as both broadloom and carpet tiles.

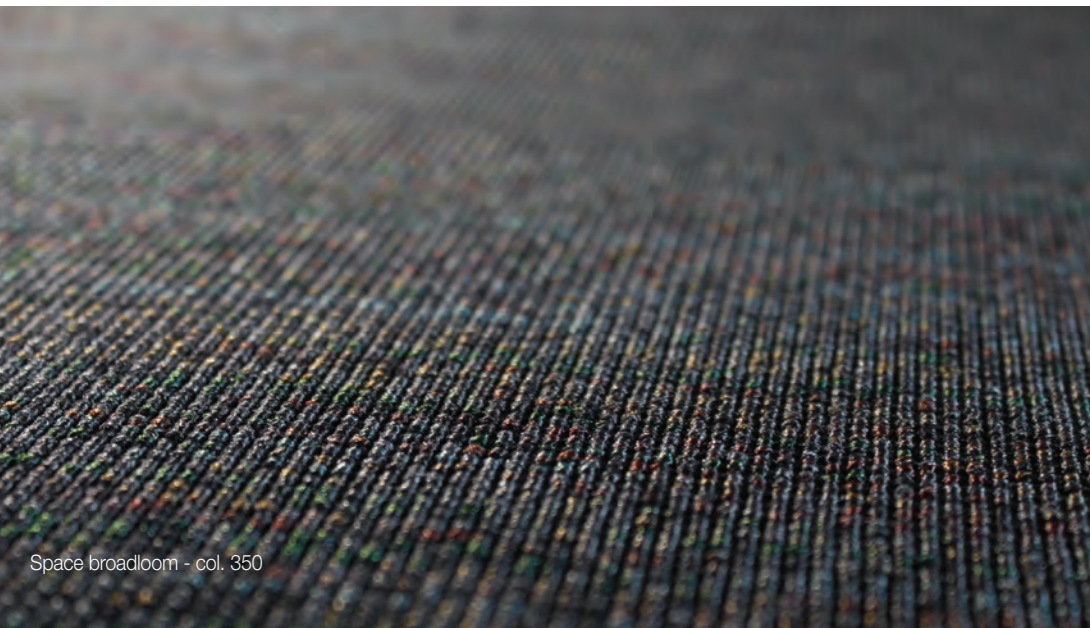
AB/WT

© Broadloom

100% PA 6.0 Aqualon

Continuous dyed

33 Commercial – heavy



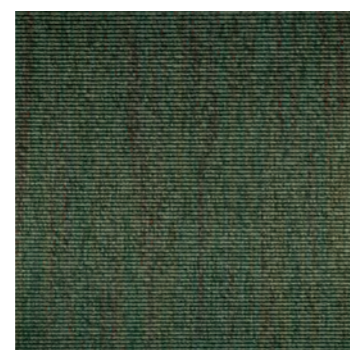
Space broadloom - col. 350



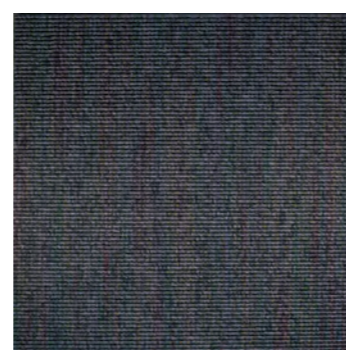
Space - col. 250



326350 - 264 m²



326720 - 118 m²



326800 - 67 m²



Space - col. 800

COM 1000

– quality and functionality at all times

With its stringently simple design, COM 1000 is the essence of a timeless carpet with an emphasis on exquisite quality and exceptional functionality. The classic expression sparks associations to cobblestone paving, a classic architectural element in the urban space.

The flat-woven carpet is the obvious first choice in settings with extraordinary cleaning requirements along with high standards for quality and comfort.

COM 1000 is woven from dyed-in-the-wool yarn, which ensures that the carpet will stay beautiful in settings that are subject to especially demanding cleaning procedures.

Available as broadloom

For more information on our outlet carpet tile selection, please see separate catalog.

SiBa felt backing



328160 - 143 m2



328260 - 50 m2



328370 - 20 m2



© Broadloom 400 cm width

100% PA 6.0

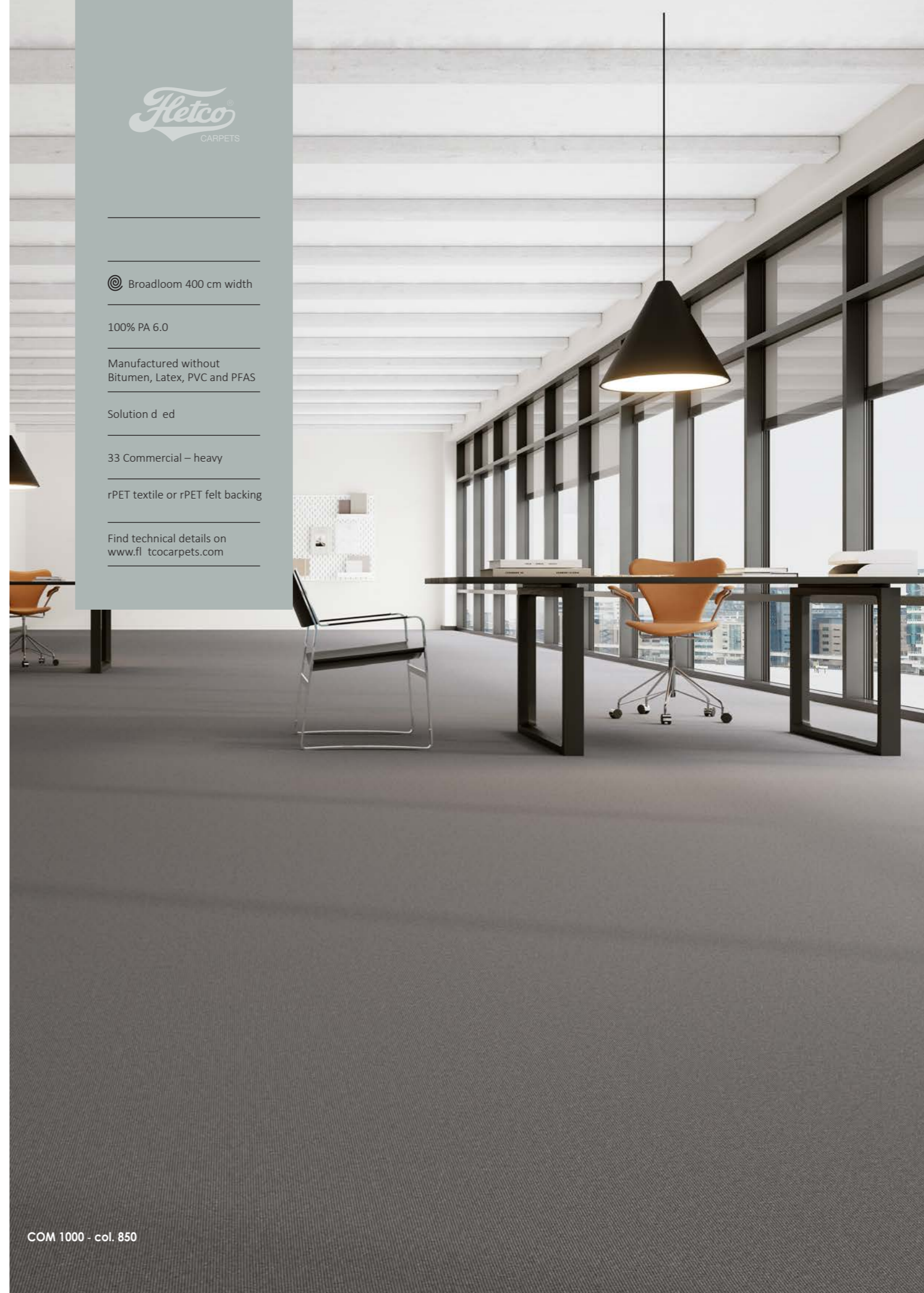
Manufactured without
Bitumen, Latex, PVC and PFAS

Solution dyed

33 Commercial – heavy

rPET textile or rPET felt backing

Find technical details on
www.fletcocarpets.com



COM 1000 - col. 850

CHAIN

– culture-bearing and sustainable

With its stringent design and robust weave, Chain is true to the elegance and venerable history of weaving.

The interweaving of warp and weft brings the flat-woven carpet to life.

In addition to the continued chain of weaving history, the name also refers to another significant invention, namely the bicycle chain.

Denmark has more bicycles per capita than any other country in the world, cycling is a natural part of our culture – and many people use the bicycle as their primary mode of transport, to the benefit of both people and the environment.

Chain is made of 100% recycled Econyl® yarn.

In combination with the durable design and sublime wearability, this makes the flat-woven carpet well suited for design, interior and architectural projects where sustainability goes hand in hand with aesthetics and uncompromising quality

SiBa felt backing



349350 - 395 m2



© Broadloom 400 cm width

100% PA 6 Econyl®

Manufactured without Bitumen, Latex, PVC and PFAS

Continuous d ed

33 Commercial – heavy

rPET textile or rPET elt backing

Find technical details on www.fletcocarpets.com

Chain - col. 670

NOVE

– timeless herringbone

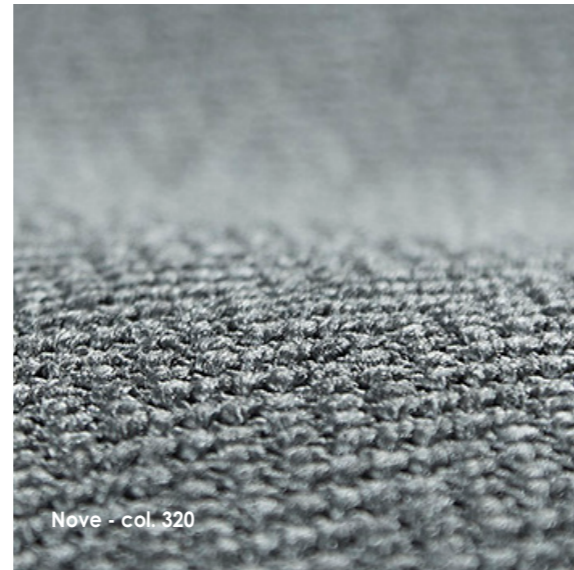
Nove is a bouclé weave in a distinctive design that offers a subtle and modern interpretation of a classic herringbone pattern. With reference to the exemplary anatomy of fish, the herringbone pattern has for centuries been used on everything from tailormade suits to stately floors in precious woods. In extension of this tradition, the design has become a mark of elegance, timelessness and exclusive quality.

Nove embodies these same qualities. With its unmatched wearability, this elegant flat-woven carpet is well suited for workplace settings. Thanks to its sophisticated woven design, which brings a contemporary quality to the classic herringbone pattern, and a carefully curated colour palette, Nove will maintain both its beauty and its relevance for many years to come.

Silent Bac



460120 - 113 m²



Nove - col. 320



© Broadloom 400 cm width

100% PA 6.6 Ultron®

Manufactured without
Bitumen, Latex, PVC and PFAS

Continuous dyed

33 Commercial – heavy

rPET textile or rPET felt backing

Find technical details on
www.fletcocarpets.com

Nove - col. 850

Ex-Dono Weave

AB/WT

© Broadloom

100% PA 6.6 Invista
Antron® Legacy™

Continuous dyed

33 Commercial – heavy



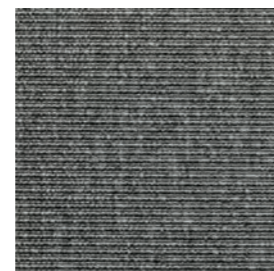
Ex-Dono Weave - col. 390



350200 - 343 m²



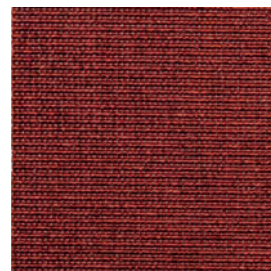
350300 - 628 m²



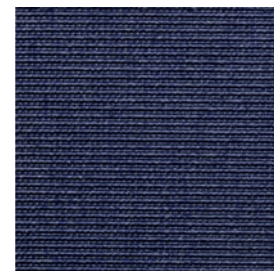
350320 - 1325 m²



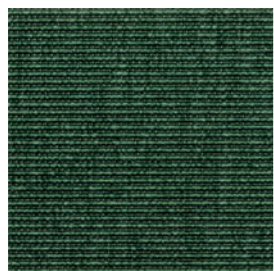
350390 - 39 m²



350600 - 253 m²



350650 - 301 m²



350760 - 335 m²



350780 - 108 m²



350840 - 85 m²



350870 - 173 m²



Ex-Dono Weave - col. 390

Corduroy

AB/WT

© Broadloom

100% PA 6.6 Invista
Antron® Legacy™

Continuous dyed

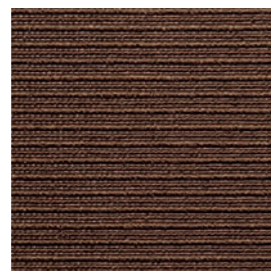
33 Commercial – heavy



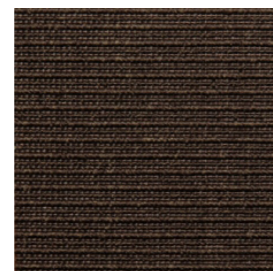
Corduroy - col. 350



352210 - 82 m²



352240 - 1708 m²



352280 - 59 m²



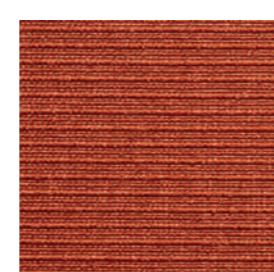
352320 - 136 m²



352350 - 55 m²



352420 - 48 m²



352600 - 193 m²



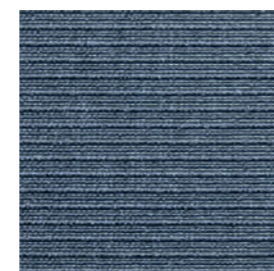
352640 - 41 m²



352720 - 387 m²



352760 - 123 m² (3 mtr) - 537 m² (4 mtr)



352810 - 158 m²



352850 - 80 m²



Corduroy - more colours

Corduroy

SiBa felt backing

© Broadloom

100% PA 6.6 Invista
Antron® Legacy™

Continuous dyed

33 Commercial – heavy



352890 - 57 m²



Corduroy - col. 350



Corduroy - more colours

Ex-Dono Megaweave

AB/WT + SiBa felt backing

© Broadloom

100% PA 6.6 Invista
Antron® Legacy™

Continuous dyed

33 Commercial – heavy



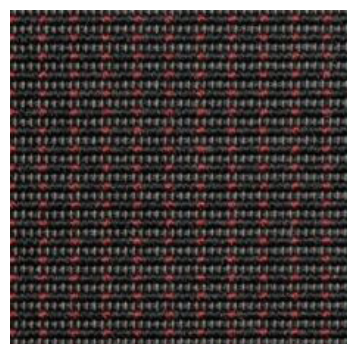
Ex-Dono Megaweave - col. 360



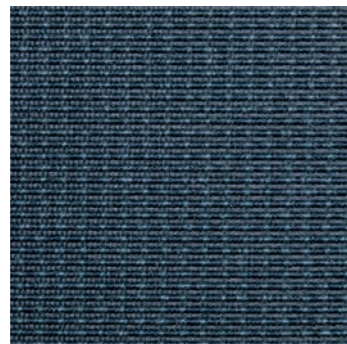
Ex-Dono Megaweave - col. 360



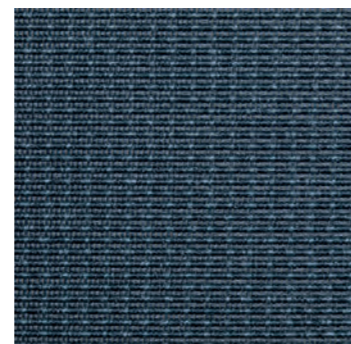
Ex-Dono Megaweave - col. 360



355600 - 111 m2



355840 - 16 m2 (AB/WT)



355840 - 96 m2 (SiBa) (3,5 mtr.)

Ex-Dono Metalweave

AB/WT

© Broadloom

100% PA 6.6 Invista Antron®
Legacy™

Continuous dyed

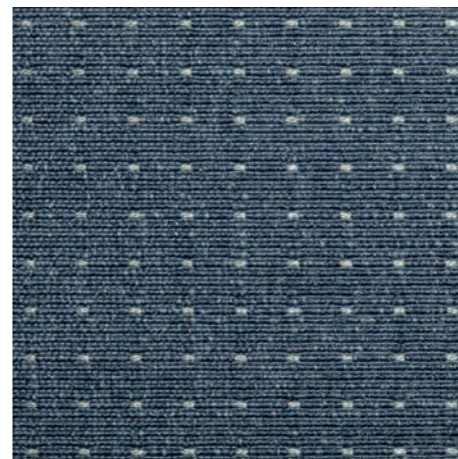
33 Commercial – heavy



Ex-Dono Metalweave - col. 390



Ex-Dono Metalweave - col. 390



356800 - 80 m²

UNO

– like neat and orderly lines in the landscape

Uno is a classical flat-woven carpet design based on proud traditions of weaving craftsmanship and characterized by extreme durability and a subtle weave.

The elegant, almost minimalist expression with clean, straight lines brings to mind the countless fields throughout the Danish landscape, which follow the same orderly pattern, year after year, as they have for generations.

With a harmonious surface, Uno complement modern and more traditional architecture equally well.

Uno is defined by uniform lines, while Duo presents a two-part linear expression with both wide and narrow lines.

The design is available in a broad palette of standard colours ranging from classic earth tones to more vibrant accent notes, depending on whether the carpet should form a calm foundation or accentuate other design elements.



© Broadloom 400 cm width

100% PA 6.6 Ultron®

Manufactured without Bitumen, Latex, PVC and PFAS

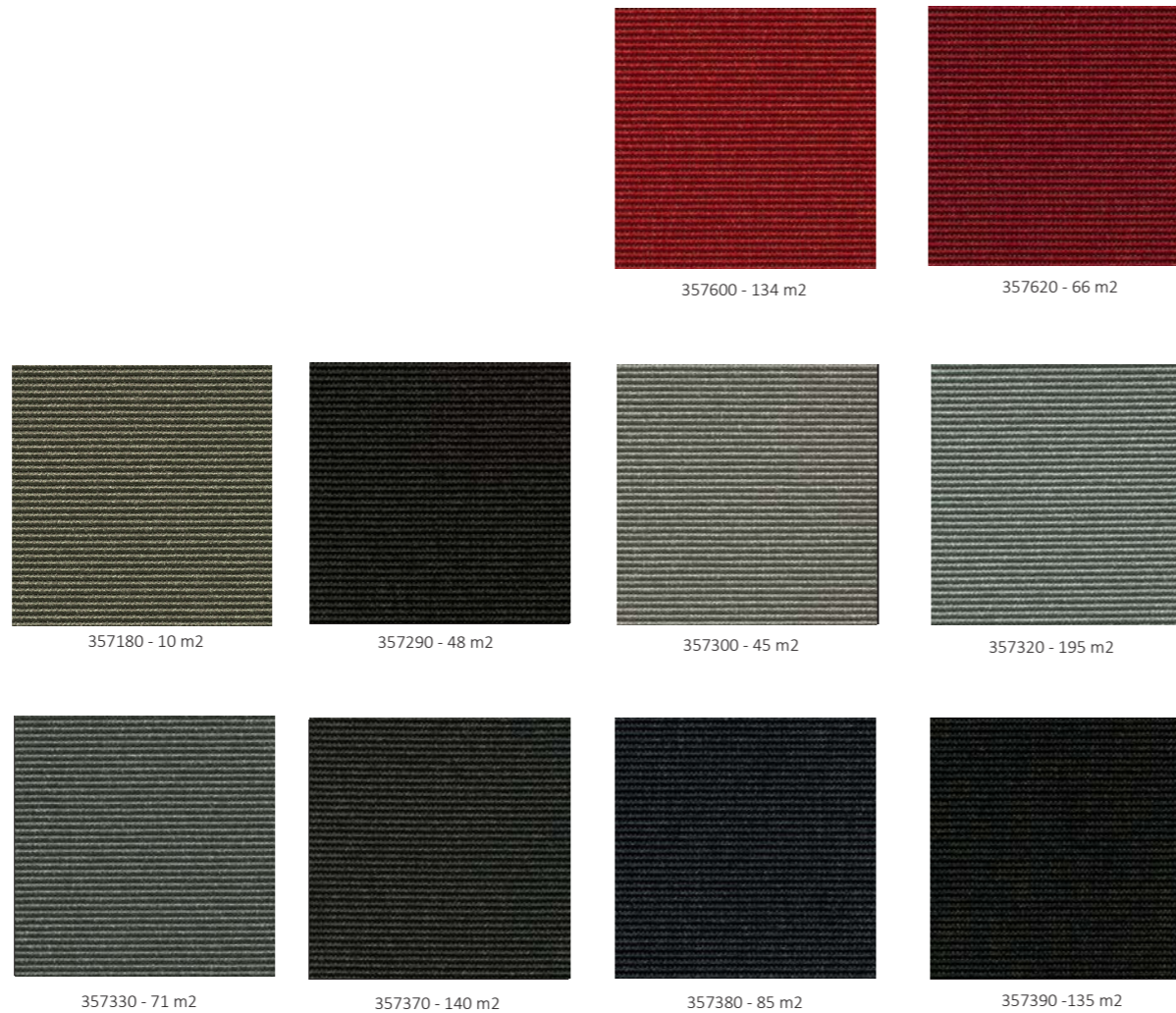
Continuous d ed

33 Commercial – heavy

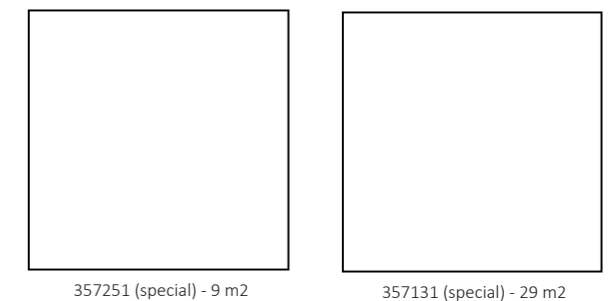
rPET textile or rPET elt backing

Find technical details on www.fletcocarpets.com

SiBa felt backing



AB/WT



357251 (special) - 9 m2

357131 (special) - 29 m2

DUO

– like neat and orderly lines in the landscape

Duo is a classical flat-woven carpet design based on proud traditions of weaving craftsmanship and characterized by extreme durability and a subtle weave. The elegant, almost minimalist expression with clean, straight lines brings to mind the countless fields throughout the Danish landscape, which follow the same orderly pattern, year after year, as they have for generations.

With their harmonious surface, Duo complement modern and more traditional architecture equally well. Uno is defined by uniform lines, while Duo presents a two-part linear expression with both wide and narrow lines.

The design is available in a broad palette of standard colours ranging from classic earth tones to more vibrant accent notes, depending on whether the carpet should form a calm foundation or accentuate other design elements.



Duo - col. 100



Duo - col. 120



© Broadloom 400 cm width

100% PA 6.6 Ultron®

Manufactured without Bitumen, Latex, PVC and PFAS

Continuous d ed

33 Commercial – heavy

rPET textile or rPET elt backing

Find technical details on www.fletcocarpets.com

SiBa felt backing



358200 - 141 m2



358300 - 51 m2



358350 - 244 m2



358360 - 116 m2

DUO

– like neat and orderly lines in the landscape

Duo is a classical flat-woven carpet design based on proud traditions of weaving craftsmanship and characterized by extreme durability and a subtle weave. The elegant, almost minimalist expression with clean, straight lines brings to mind the countless fields throughout the Danish landscape, which follow the same orderly pattern, year after year, as they have for generations.

With their harmonious surface, Duo complement modern and more traditional architecture equally well. Uno is defined by uniform lines, while Duo presents a two-part linear expression with both wide and narrow lines.

The design is available in a broad palette of standard colours ranging from classic earth tones to more vibrant accent notes, depending on whether the carpet should form a calm foundation or accentuate other design elements.

Contract foam backing



358600 - 72 m2



© Broadloom 400 cm width

100% PA 6.6 Ultron®

Manufactured without Bitumen, Latex, PVC and PFAS

Continuous d ed

33 Commercial – heavy

rPET textile or rPET elt backing

Find technical details on www.fletcocarpets.com

Fine Line

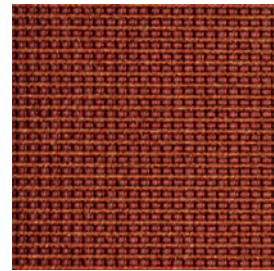
AB/WT

© Broadloom

100% PA 6.6 Invista
Antron® Legacy™

Continuous dyed

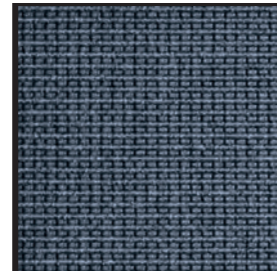
33 Commercial – heavy



361600 - 96 m²



361720 - 156 m²



361800 - 69 m²



361850 - 339 m²



361890 - 133 m²



NORDIC LIVING

– style and comfort in one

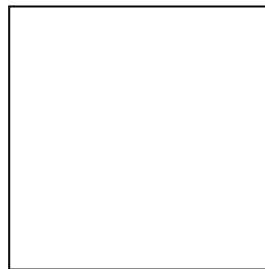
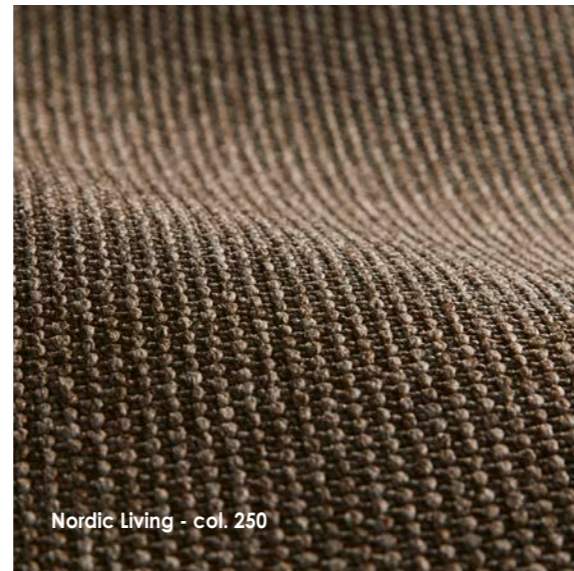
Nordic Living brings a refreshing touch to the classic flat-woven bouclé pile.

The dense loops with the recurring rounded shapes spark associations to the countless apples that are harvested every year in local Danish orchards and stacked, row after row, in apple crates to find their way into lunch boxes, cakes and dinners as the essence of the Nordic lifestyle and "hygge".

The unique weave gives the hardwearing carpet a vibrant colour play and a lovely Scandinavian expression that makes Nordic Living a beautiful and elegant choice.

The carpet is available as broadloom and as square carpet tiles in a beautiful colour scale that includes classic colours as well as livelier notes for bolder interiors.

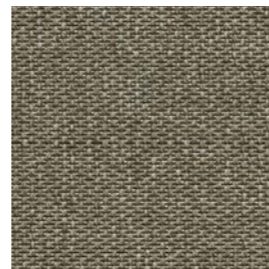
SiBa felt backing



377131 (specialfarve) - 87 m2



377150 - 201 m2



377200 (2 mtr.) - 140 m2



© Broadloom 400 cm width

100% PA 6.6

Manufactured without Bitumen, Latex, PVC and PFAS

Continuous dyed

33 Commercial – heavy

rPET felt backing*
rPET textile or rPET felt backing

Find technical details on www.fletcocarpets.com



Nordic Living - col. 200

NORDIC

– Nordic beauty for all times

Nordic offers a similarly simple design as COM 1000 and is the essence of a timeless carpet with high quality as the key factor. The classic expression sparks associations to cobblestone paving, a classic architectural element in the urban space.

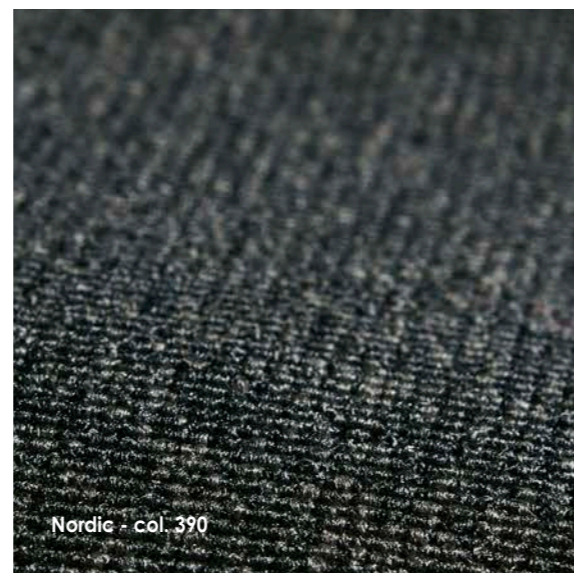
With its Nordic simplicity, based on proud weaving traditions, this carpet is a beautiful choice at all times and for any type of commercial project.

Like most Fletco carpets, Nordic is woven of white, undyed yarn and dyed after weaving, which offers a high degree of flexibility for specific commissions, a wider colour range and the possibility of custom colours.

Available as broadloom.

For more information on carpet tile solutions, please see separate catalog.

SiBa felt backing



© Broadloom 400 cm width

100% PA 6.6 Ultron*

100% free of Bitumen, PVC and Latex

Continuous dyed

33 Commercial – heavy

rPET felt backing*
rPET textile or rPET felt backing

Find technical details on
www.fletcocarpets.com

Nordic broadloom - col. 320



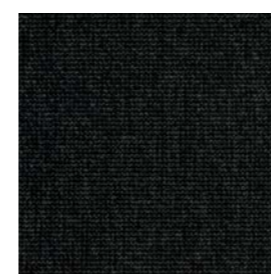
394290 - 215 m2



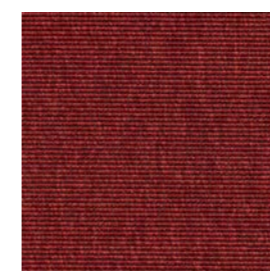
394340 - 69 m2



394360 - 393 m2



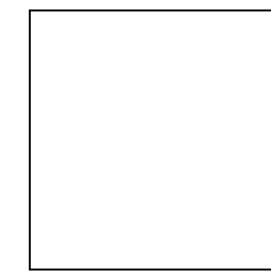
394395 - 649 m2



394600 37 m2



394680 - 162 m2



394445 (web code) - 124 m2 (4 mtr.) + 204 m2 (3,8 mtr.)

NORDIC

– Nordic beauty for all times

Nordic offers a similarly simple design as COM 1000 and is the essence of a timeless carpet with high quality as the key factor. The classic expression sparks associations to cobblestone paving, a classic architectural element in the urban space.

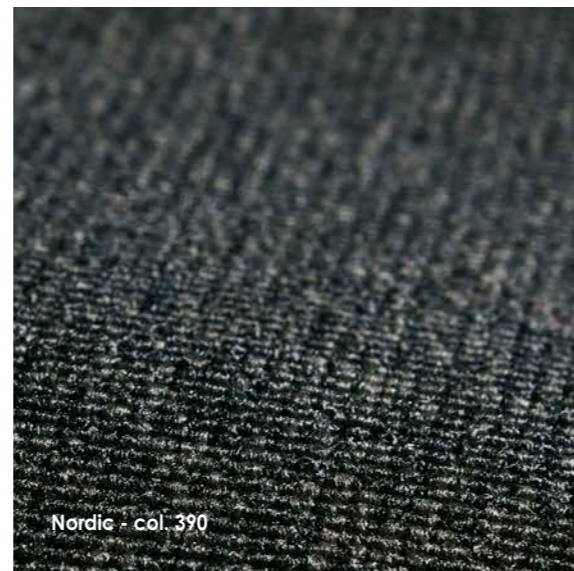
With its Nordic simplicity, based on proud weaving traditions, this carpet is a beautiful choice at all times and for any type of commercial project.

Like most Fletco carpets, Nordic is woven of white, undyed yarn and dyed after weaving, which offers a high degree of flexibility for specific commissions, a wider colour range and the possibility of custom colours.

Available as broadloom.

For more information on carpet tile solutions, please see separate catalog.

AB/WT



© Broadloom 400 cm width

100% PA 6.6 Ultron*

100% free of Bitumen,
PVC and Latex

Continuous dyed

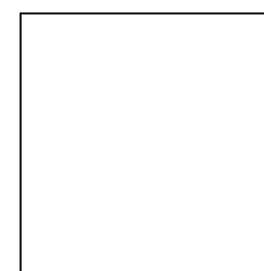
33 Commercial – heavy

rPET felt backing*
rPET textile or rPET felt backing

Find technical details on
www.fletcocarpets.com



394340 (2 mtr.) - 1360 m2



394402 - 74 m2

QUATTRO

– nature's beautiful asymmetry

With its fascinating asymmetrical pattern, Quattro exemplifies the possibility of creating complex designs with high-precision craftsmanship at the loom.

The pattern of the flat-woven carpet encapsulates the beauty of plants, as manifested in the coarse leaf structures of beans, potatoes or other plants in the kitchen garden. In combination with the plush weave, the effect is an expression that is both robust and soft.

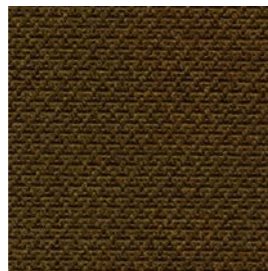
Quattro brings character and vitality to any interior, from small office spaces to large masterworks of architecture, while the repetitive structure of the asymmetrical pattern provides an elegant and calming visual field. A striking contract carpet that combines quality and durability with a beautiful design.

Available as broadloom.

SiBa felt backing



396150 - 87 m2



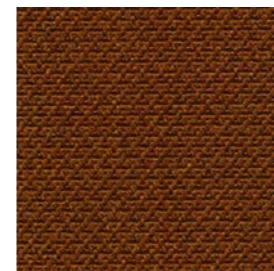
396240 - 85 m2



396380 - 63 m2



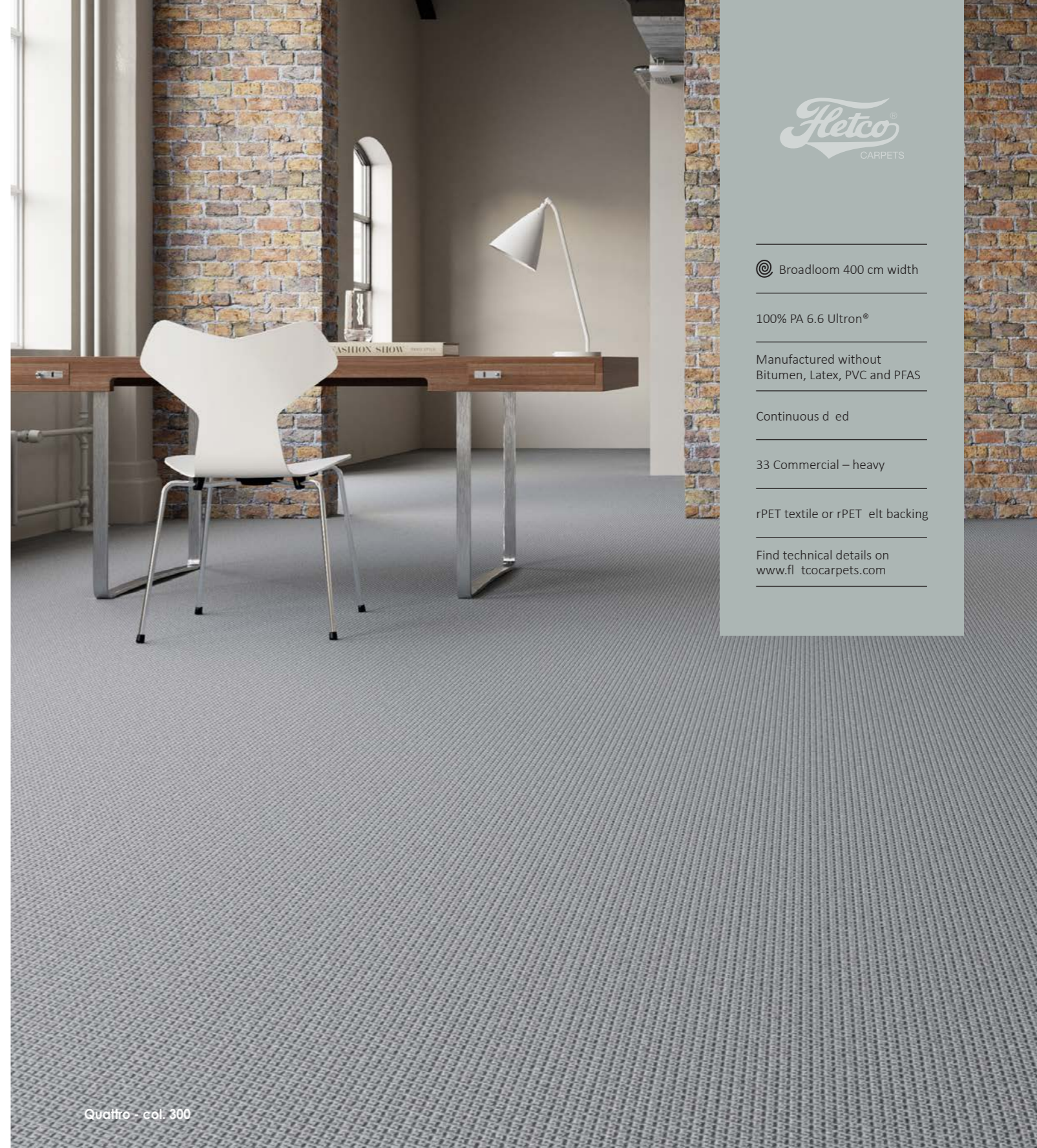
396390 - 47 m2



396480 - 100 m2



396841 - 151 m2



© Broadloom 400 cm width

100% PA 6.6 Ultron®

Manufactured without Bitumen, Latex, PVC and PFAS

Continuous dyed

33 Commercial – heavy

rPET textile or rPET felt backing

Find technical details on www.fletcocarpets.com

HØJER KONTRAKT® ORIGINAL

– infinity at the Wadden Sea since 1899

Højer Kontrakt® Original is, in every regard, a classic, original design in the category of tufted carpets.

This woollen carpet is a bouclé weave with small, dense loops on the surface and has been in production in Denmark since 1899.

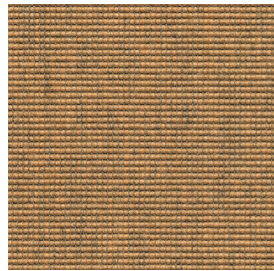
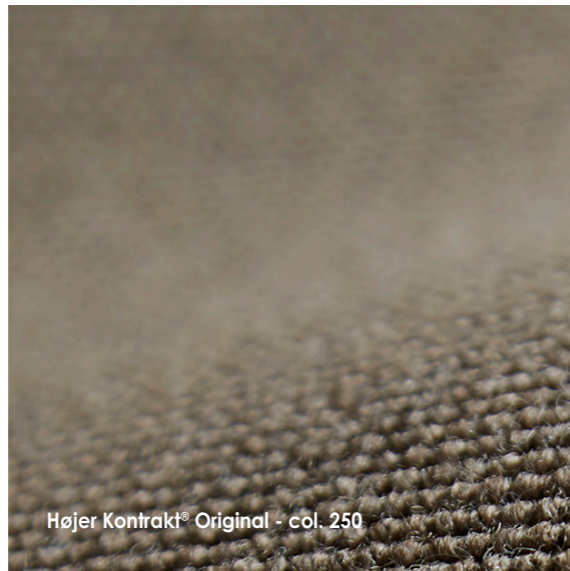
The carpet design is named after the town of Højer, which is located at the edge of the Tøndermarsken marshlands, surrounded by grazing sheep and in close proximity to the seawalls and wide open lands near the Wadden Sea – a UNESCO World Heritage site in south-western Denmark.

The timeless Højer Kontrakt® Original carpet has been part of Fletco's collection since 2013 and is made of top-quality New Zealand wool. The hand-dyed yarn has a unique melange effect that highlights the natural play of colours in the sheep's wool.

While this is especially pronounced in the beige and grey notes, the intrinsic beauty of the wool yarn is also evident in the more saturated colours and brings a warm feel to the interior.

Available as broadloom.

AB/WT



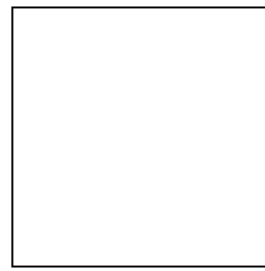
510210 - 235 m2



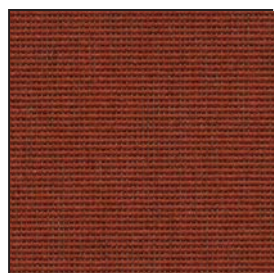
510230 - 257 m2



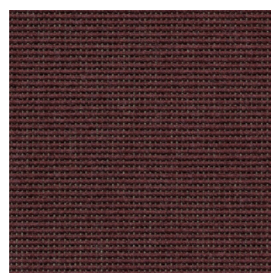
510280 - 24 m2



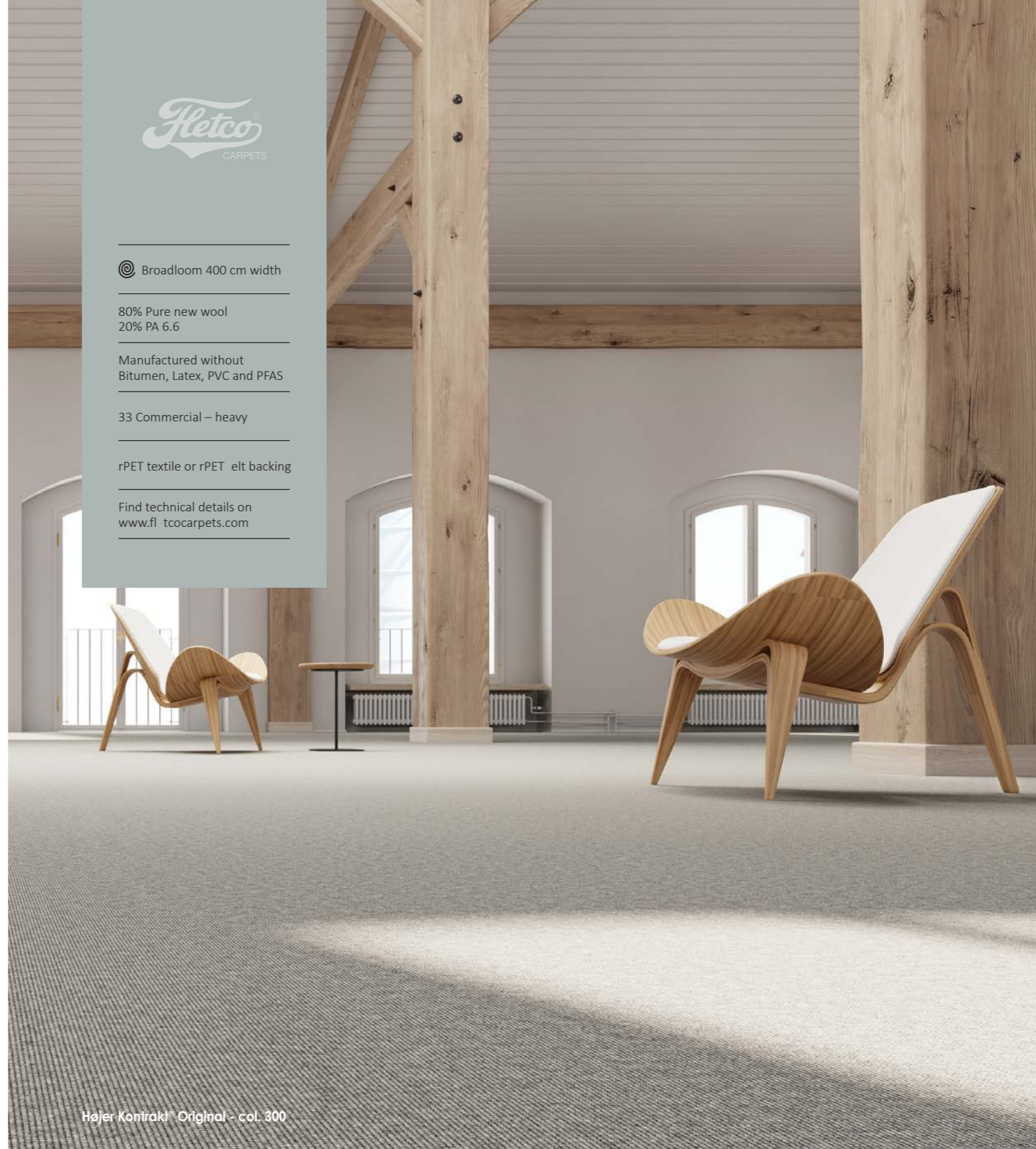
510501 - 163 m2



510620 1525 m2



510680 51 m2



© Broadloom 400 cm width

80% Pure new wool
20% PA 6.6

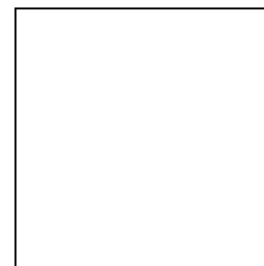
Manufactured without
Bitumen, Latex, PVC and PFAS

33 Commercial – heavy

rPET textile or rPET elt backing

Find technical details on
www.fl_tocarpets.com

Højer Kontrakt® Original - col. 300



510000 - 2580m2

HØJER KONTRAKT® ORIGINAL

– infinity at the Wadden Sea since 1899

Højer Kontrakt® Original is, in every regard, a classic, original design in the category of tufted carpets.

This woollen carpet is a bouclé weave with small, dense loops on the surface and has been in production in Denmark since 1899.

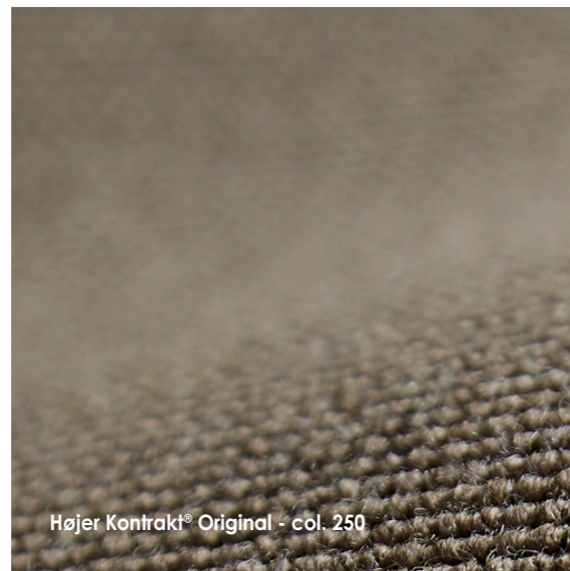
The carpet design is named after the town of Højer, which is located at the edge of the Tøndermarsken marshlands, surrounded by grazing sheep and in close proximity to the seawalls and wide open lands near the Wadden Sea – a UNESCO World Heritage site in south-western Denmark.

The timeless Højer Kontrakt® Original carpet has been part of Fletco's collection since 2013 and is made of top-quality New Zealand wool. The hand-dyed yarn has a unique melange effect that highlights the natural play of colours in the sheep's wool.

While this is especially pronounced in the beige and grey notes, the intrinsic beauty of the wool yarn is also evident in the more saturated colours and brings a warm feel to the interior.

Available as broadloom.

SiBa felt backing



510230 - 51 m2



© Broadloom 400 cm width

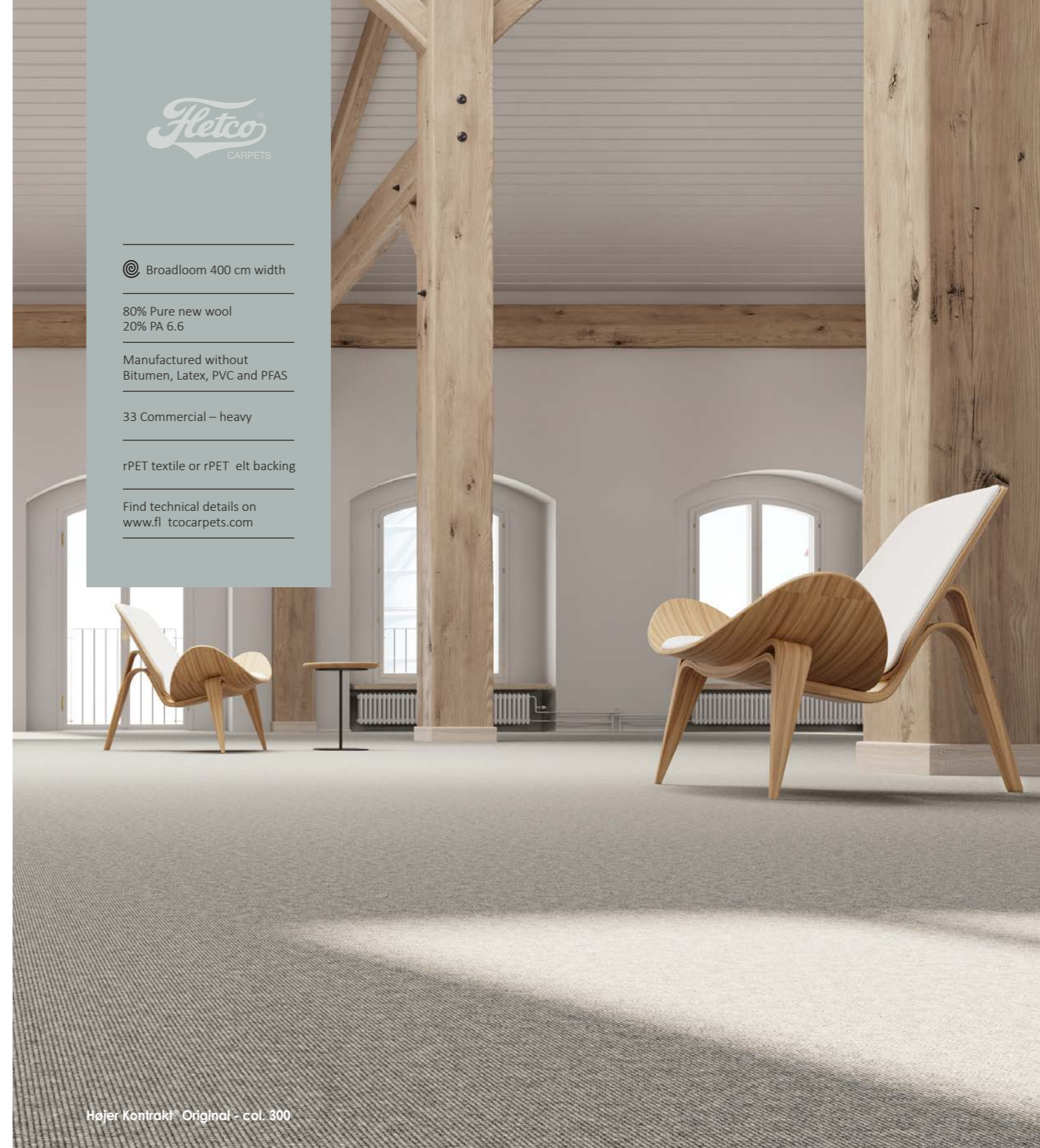
80% Pure new wool
20% PA 6.6

Manufactured without
Bitumen, Latex, PVC and PFAS

33 Commercial – heavy

rPET textile or rPET elt backing

Find technical details on
www.fletcocarpets.com



HØJER KONTRAKT® ORIGINAL

– infinity at the Wadden Sea since 1899

Højer Kontrakt® Original is, in every regard, a classic, original design in the category of tufted carpets.

This woollen carpet is a bouclé weave with small, dense loops on the surface and has been in production in Denmark since 1899.

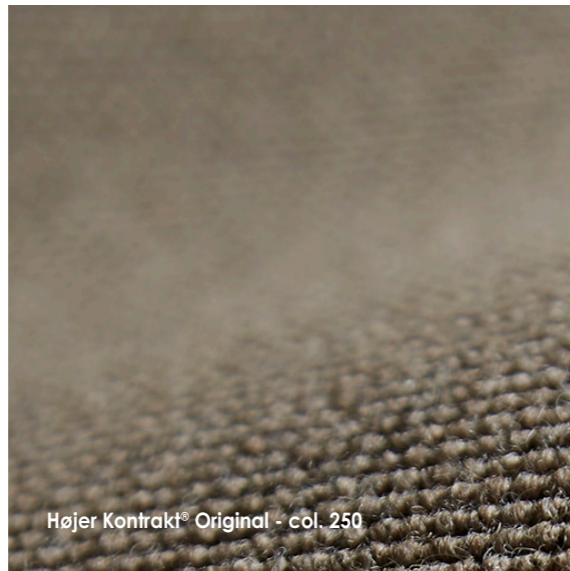
The carpet design is named after the town of Højer, which is located at the edge of the Tøndermarsken marshlands, surrounded by grazing sheep and in close proximity to the seawalls and wide open lands near the Wadden Sea – a UNESCO World Heritage site in south-western Denmark.

The timeless Højer Kontrakt® Original carpet has been part of Fletco's collection since 2013 and is made of top-quality New Zealand wool. The hand-dyed yarn has a unique melange effect that highlights the natural play of colours in the sheep's wool.

While this is especially pronounced in the beige and grey notes, the intrinsic beauty of the wool yarn is also evident in the more saturated colours and brings a warm feel to the interior.

Available as broadloom.

Unbacked



© Broadloom 400 cm width

80% Pure new wool
20% PA 6.6

Manufactured without
Bitumen, Latex, PVC and PFAS

33 Commercial – heavy

rPET textile or rPET elt backing

Find technical details on
www.fletcocarpets.com

